

NOAA West Watch Update *21 January 2025*

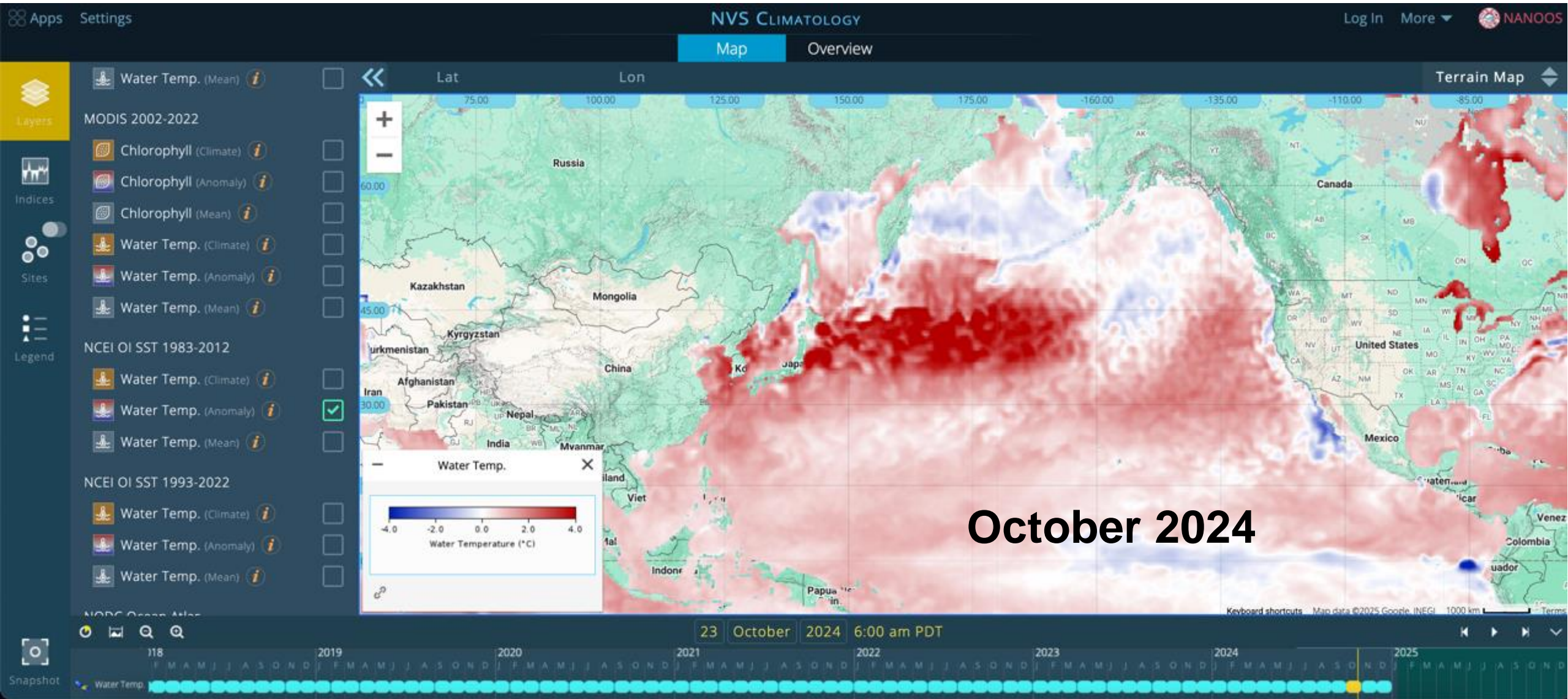
NANOOS Update

Jan Newton on behalf of many

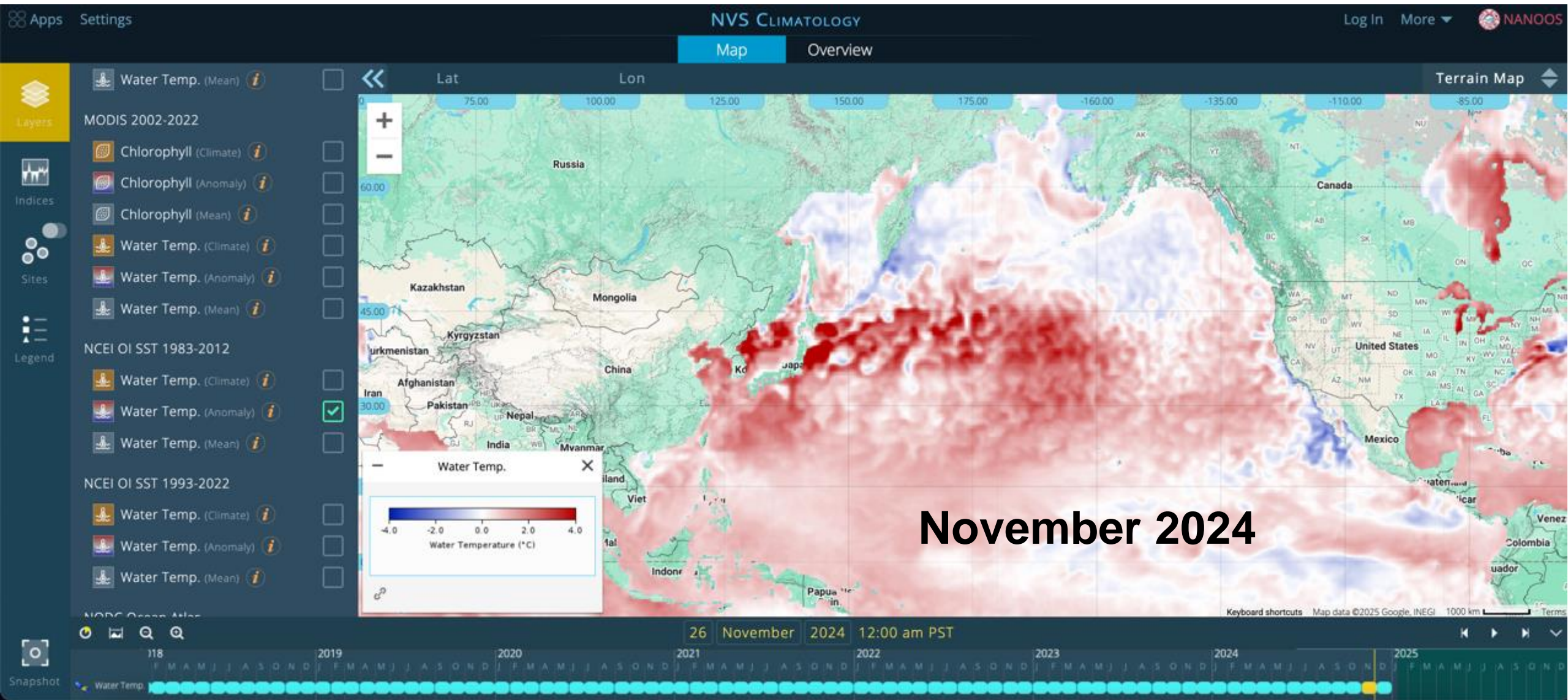
www.nanoos.org



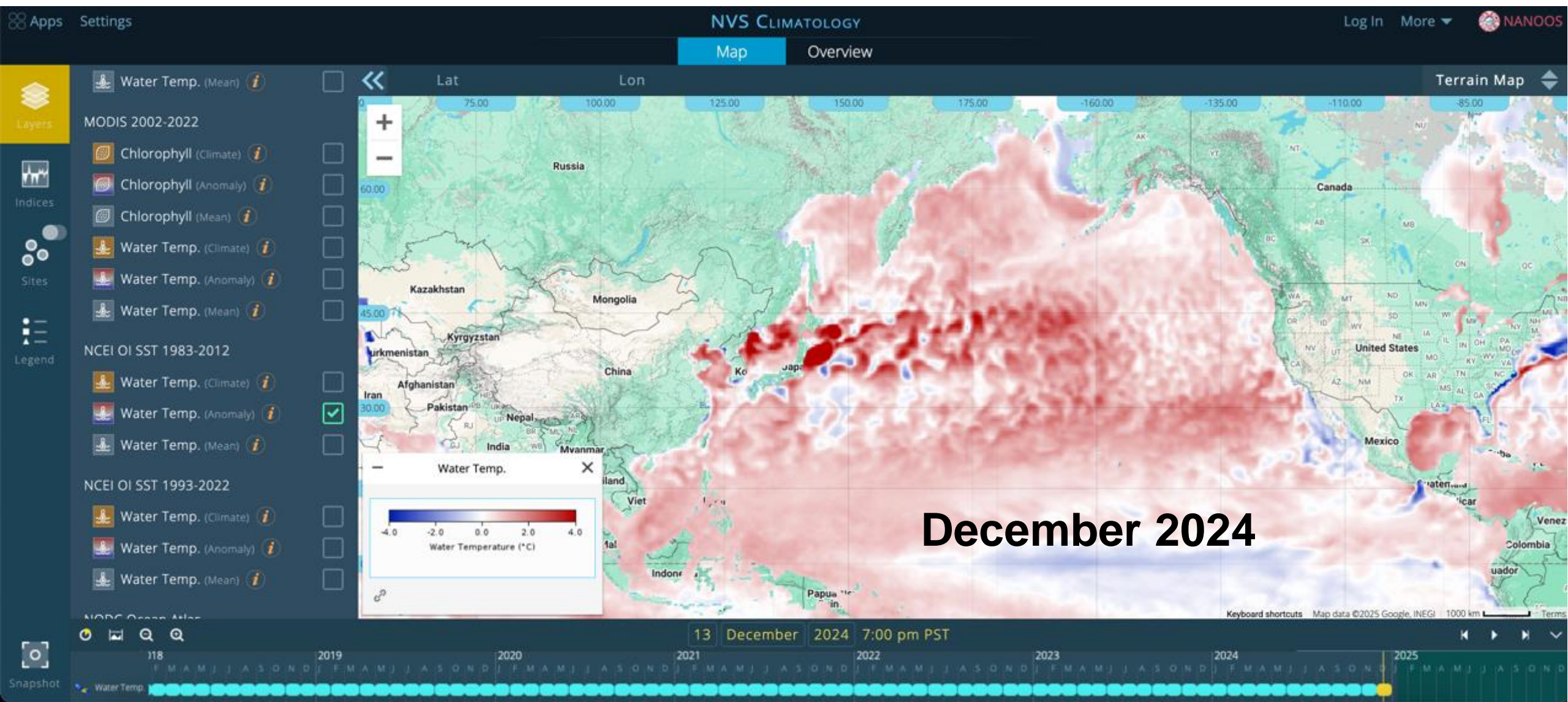
NCEI OI SST 1983-2012



NCEI OI SST 1983-2012



NCEI OI SST 1983-2012





Total cover
26.96



I Moderate
19.13



II Strong
6.1



III Severe
0.74



IV Extreme
0.99

Controls

Ice mask



Baseline



Date

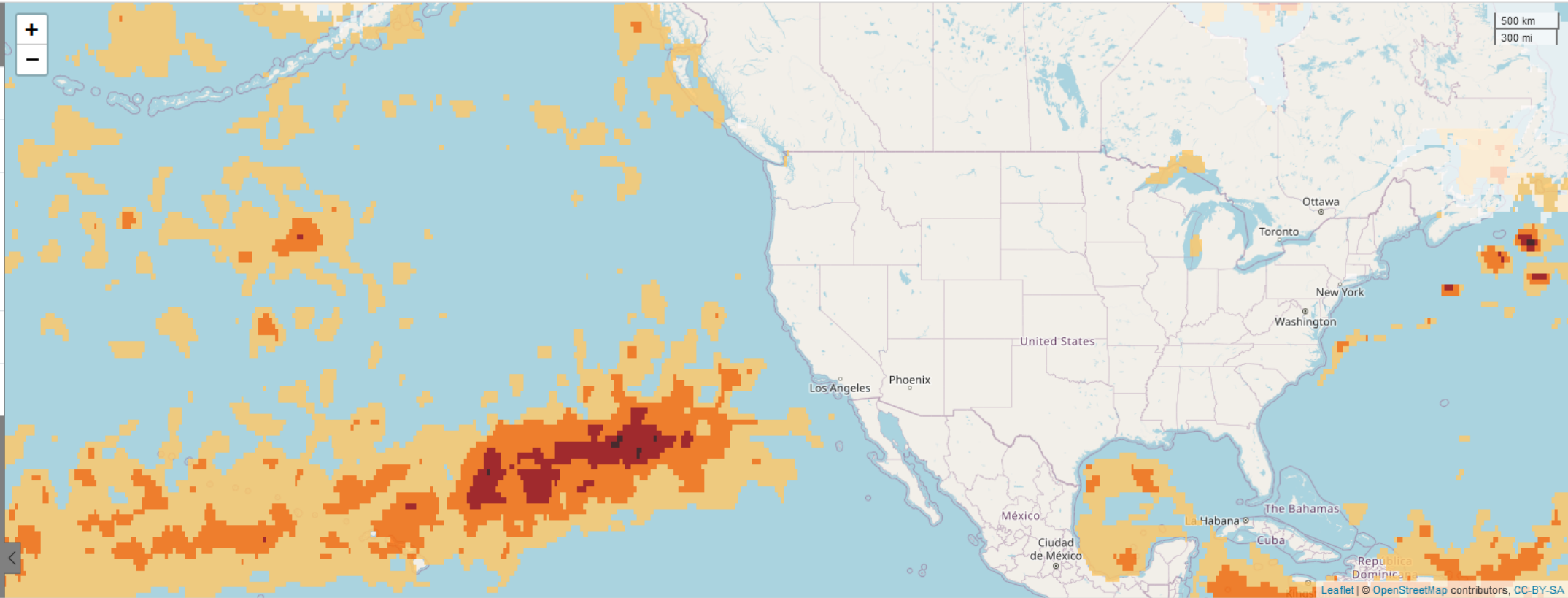


2025-01-17

Map layer



Download



The California Current Marine Heatwave Tracker - Blobtracker

Dec-13-2024

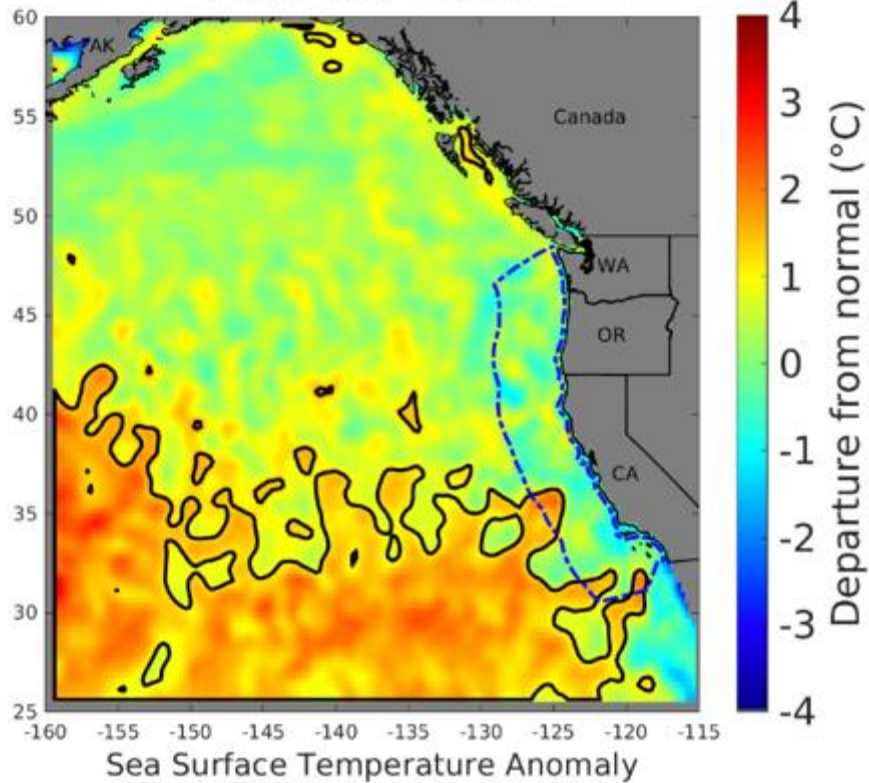
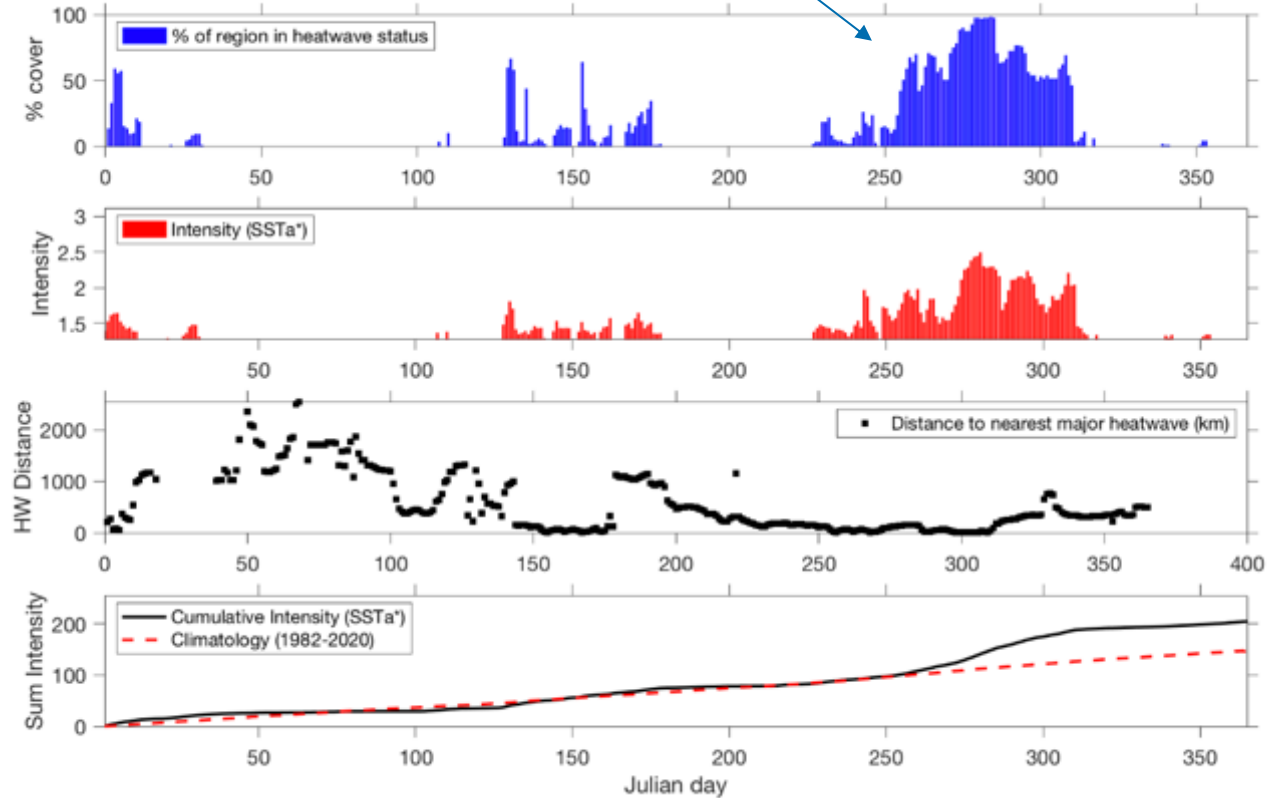
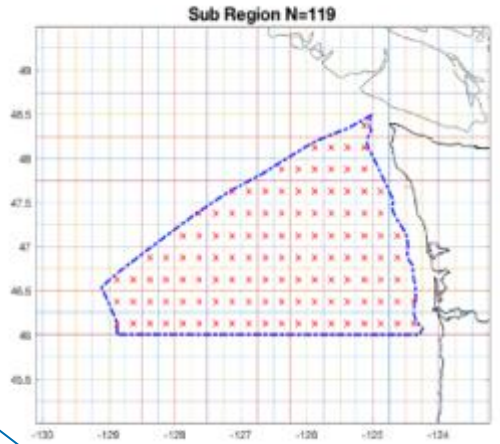


Figure 2: Science-quality (delayed 3-weeks), daily interpolated standardized sea surface temperature anomalies (SSTa) in the California Current ecosystem available for analysis of MHW presence. Dark outline shows the current extent of MHW conditions, as delineated by values of the normalized SST + 1.29 SD from normal. Blue dashed line represents the US West Coast EEZ. Data from NOAA's [Optimum interpolation Sea Surface Temperature analysis \(OISST\)](#), with the SST anomaly calculated using climatology from NOAA's AVHRR-only OISST dataset.

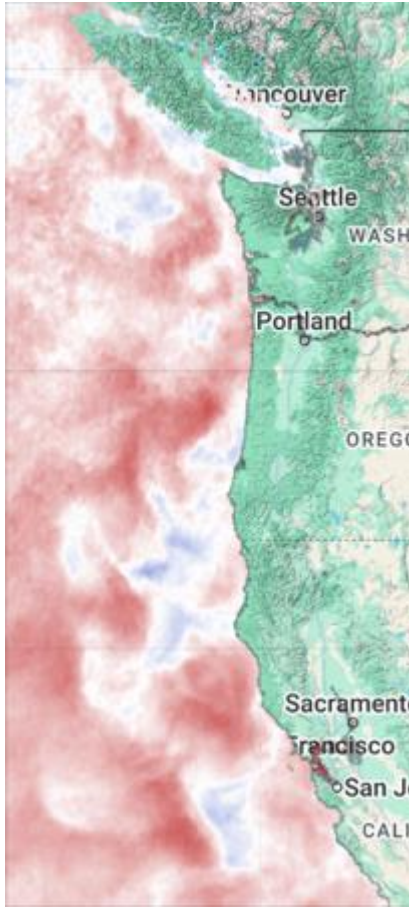
Fall MHW (Sep – Nov)

Washington



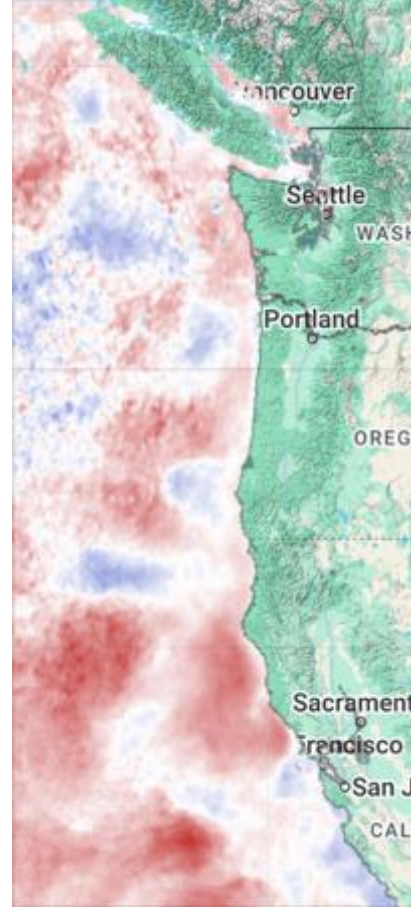
October 2024

OSU MODIS 2002-2012



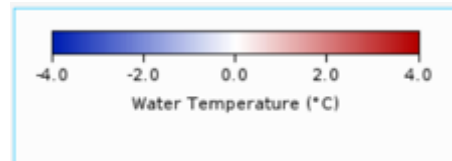
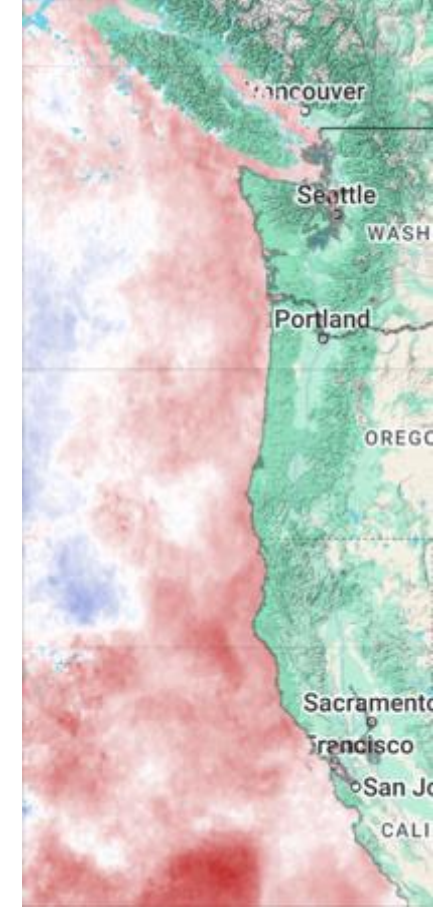
November 2024

OSU MODIS 2002-2012

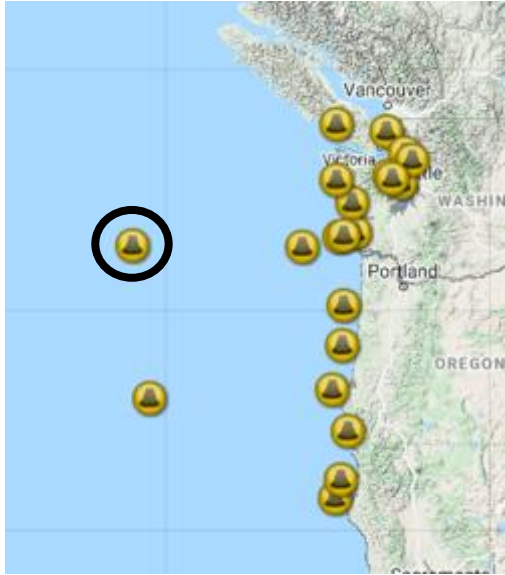


December 2024

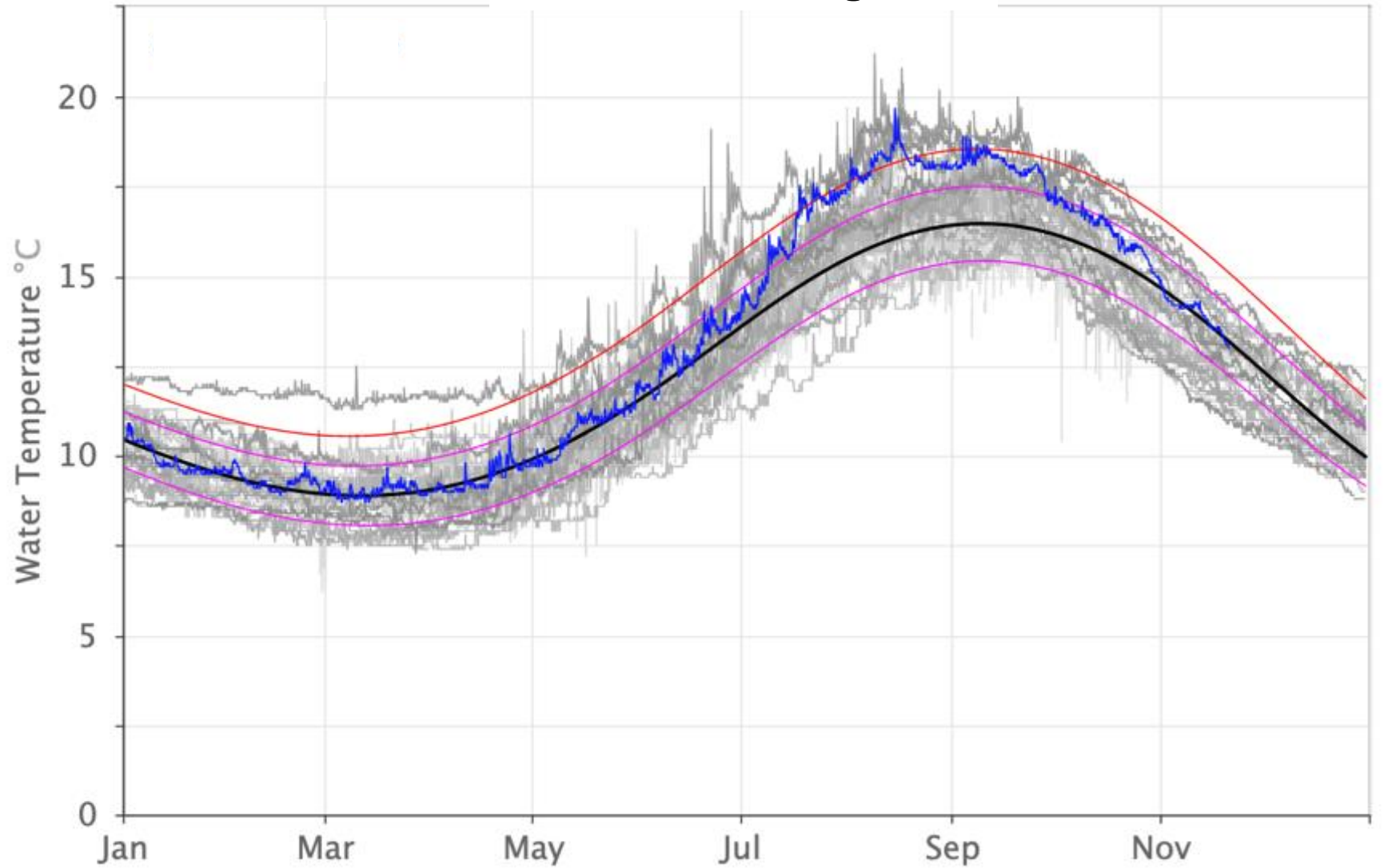
OSU MODIS 2002-2012



~300 nautical miles

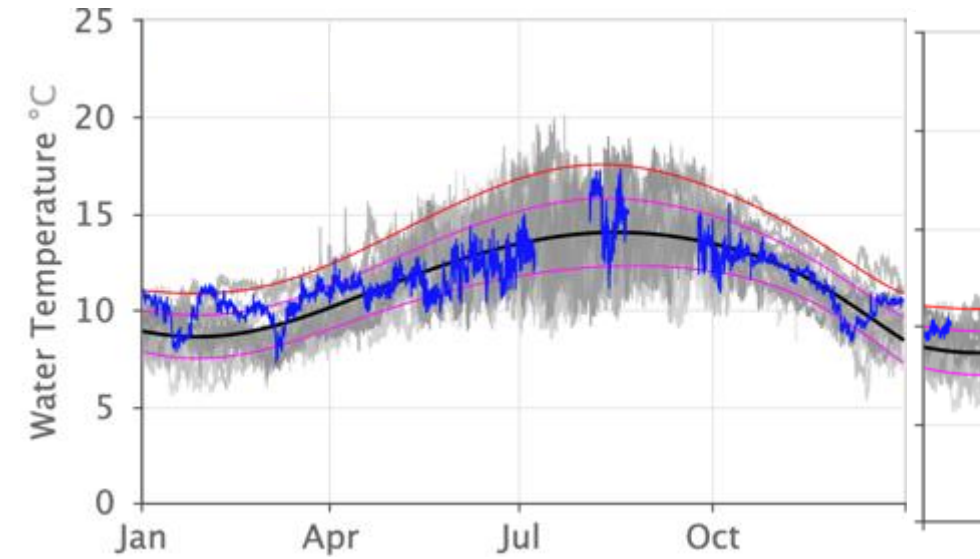


NDBC Washington

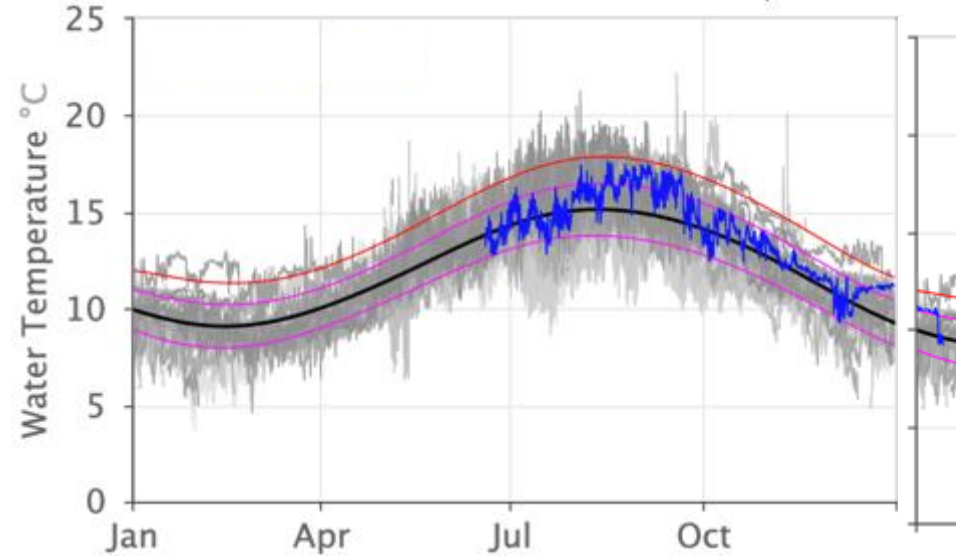


- Seasonal Cycle n=45 Yrs
- -1 STD
- +1 STD
- +2 STD
- 2024

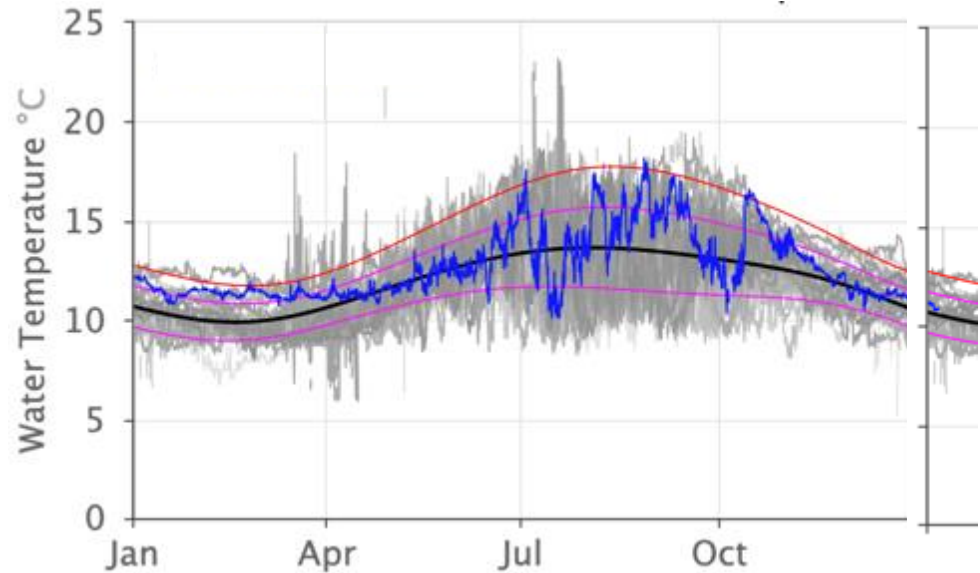
CDIP Grays Harbor ● 17 yrs



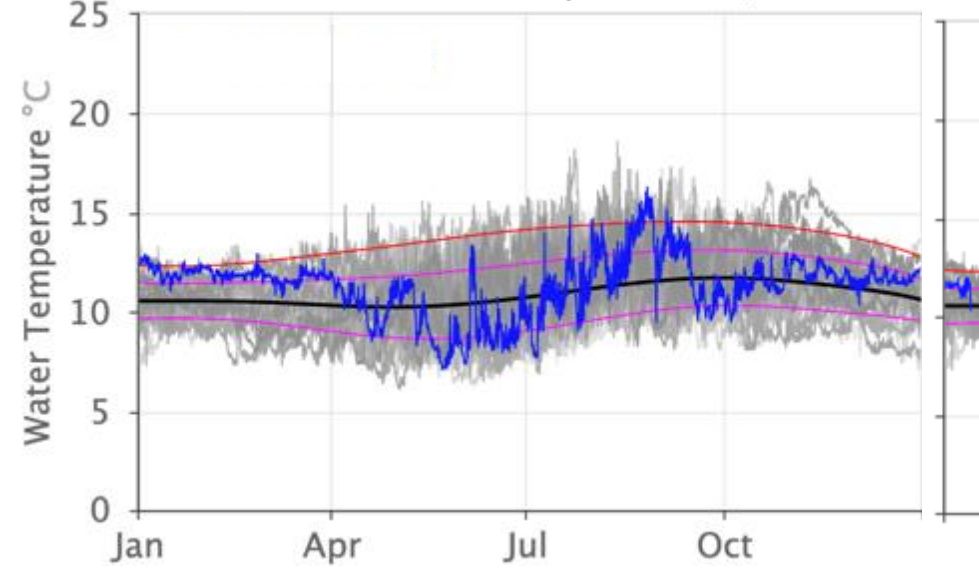
NDBC Columbia River Bar ● 37 yrs



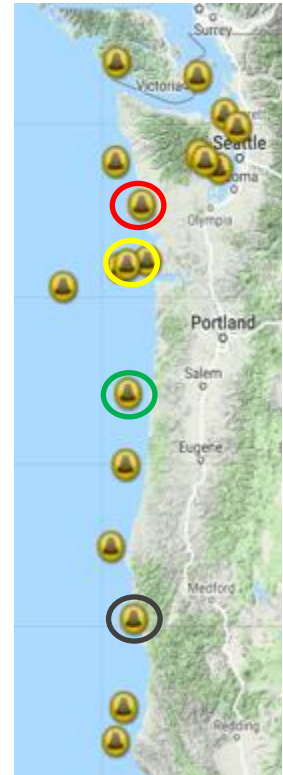
NDBC Stonewall Bank ● 34 yrs



NDBC St. Georges ● 38 yrs



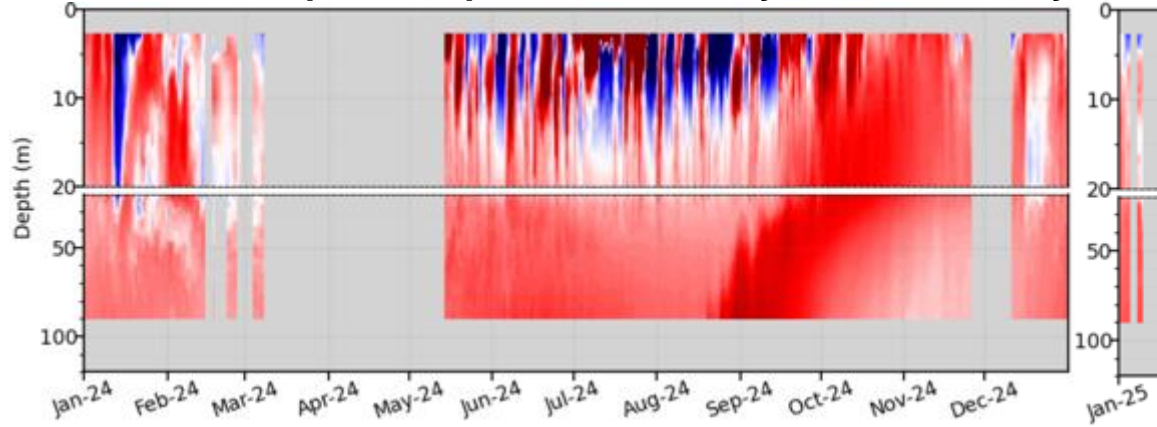
- Seasonal Cycle
- -1 STD
- +1 STD
- +2 STD
- 2023



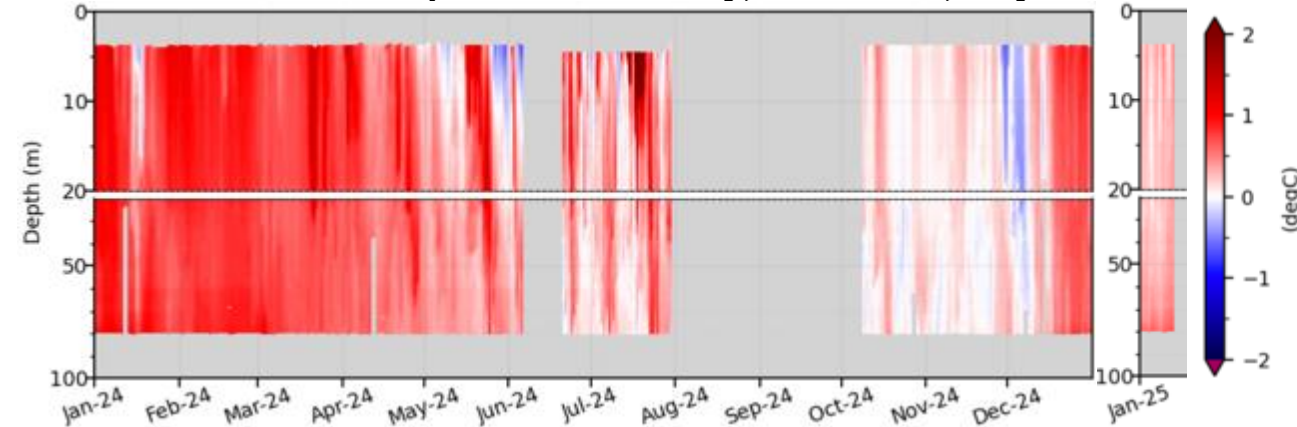
Temperature Anomalies

Puget Sound Profiling Buoys

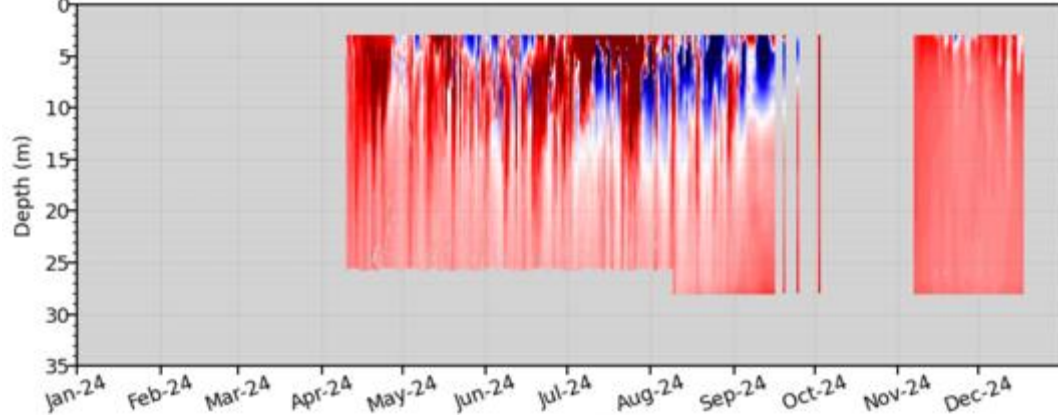
Hoodsport Temperature Anomaly, 2024-2025, 14 years



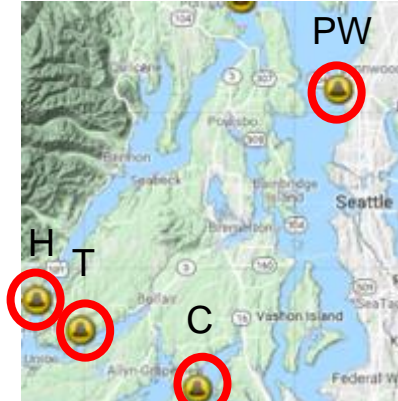
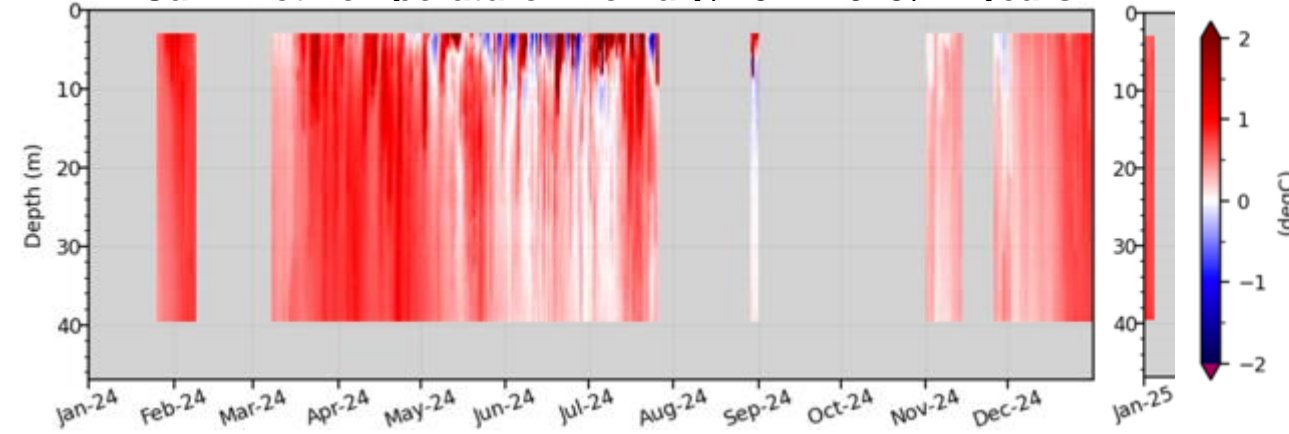
Point Wells Temperature Anomaly, 2024-2025, 14 years



Twanoh Temperature Anomaly, 2024-2025, 14 years



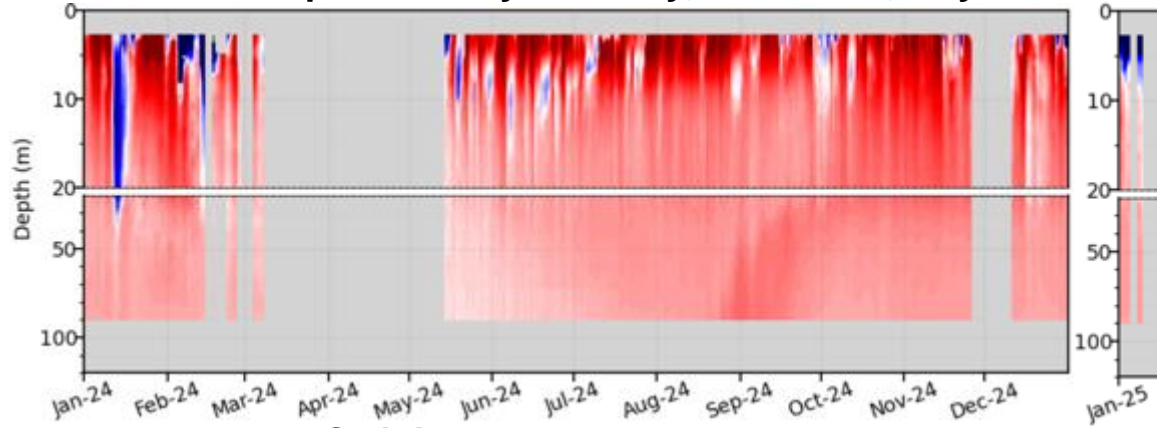
Carr Inlet Temperature Anomaly, 2024-2025, 14 years



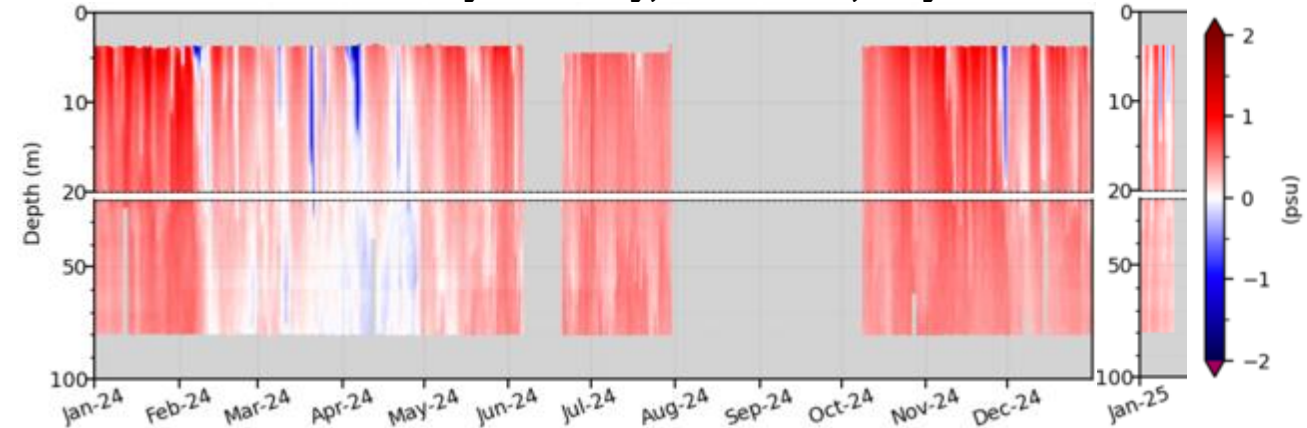
Salinity Anomalies

Puget Sound Profiling Buoys

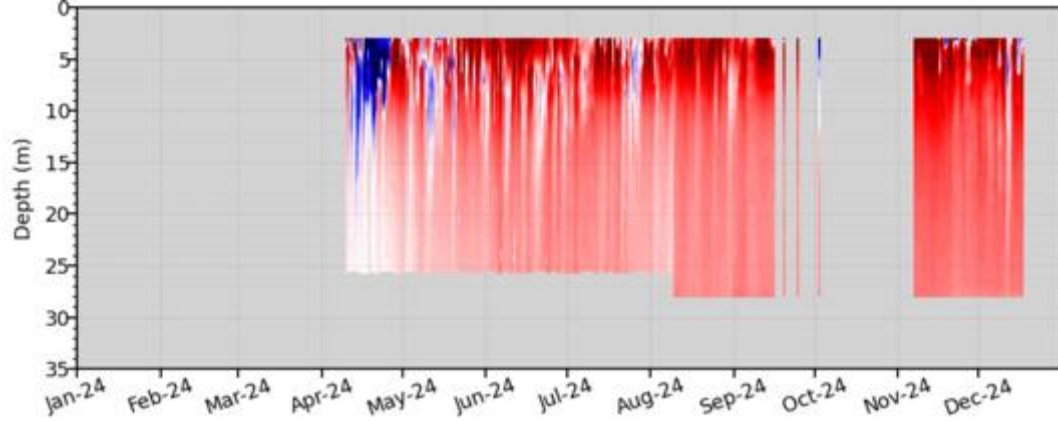
Hoodsport Salinity Anomaly, 2024-2025, 14 years



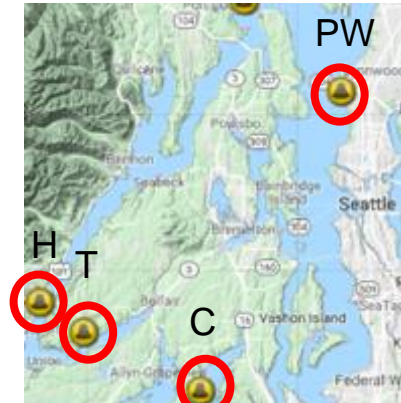
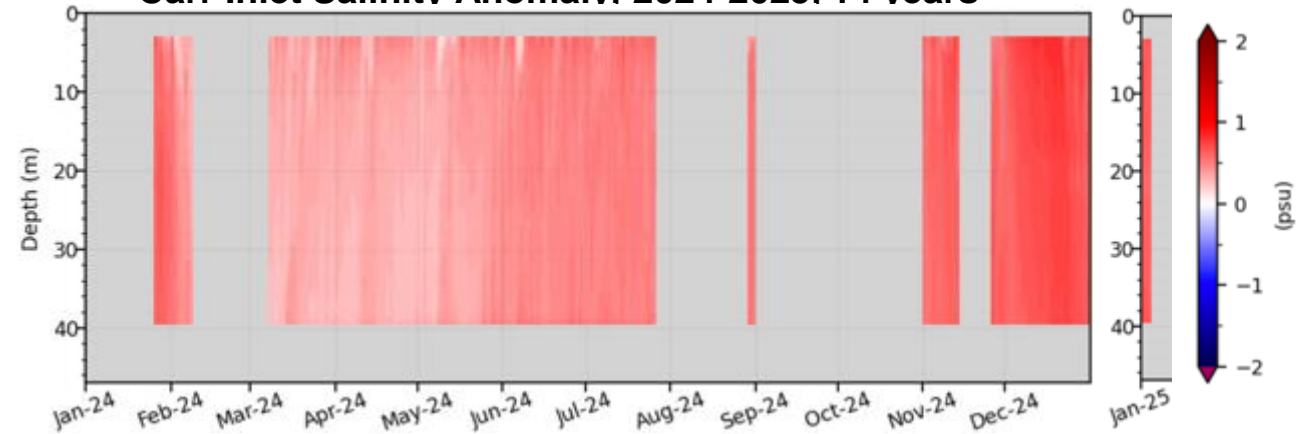
Point Wells Salinity Anomaly, 2024-2025, 14 years



Twanoh Salinity Anomaly, 2024-2025, 14 years



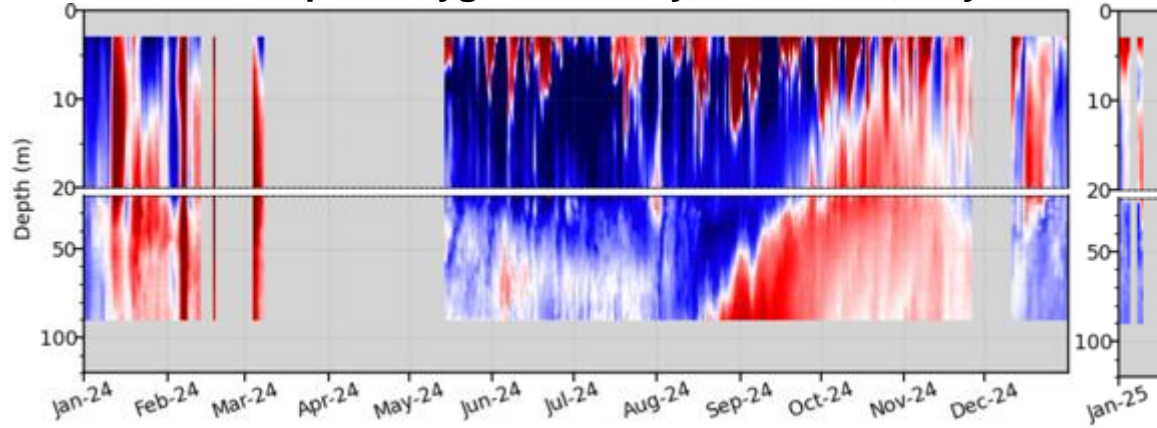
Carr Inlet Salinity Anomaly, 2024-2025, 14 years



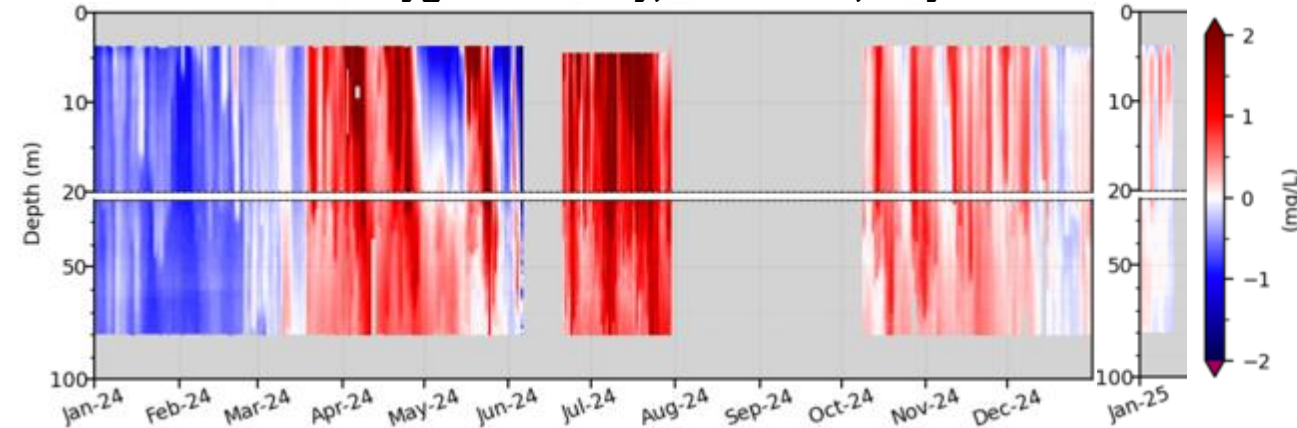
Dissolved Oxygen Anomalies

Puget Sound Profiling Buoys

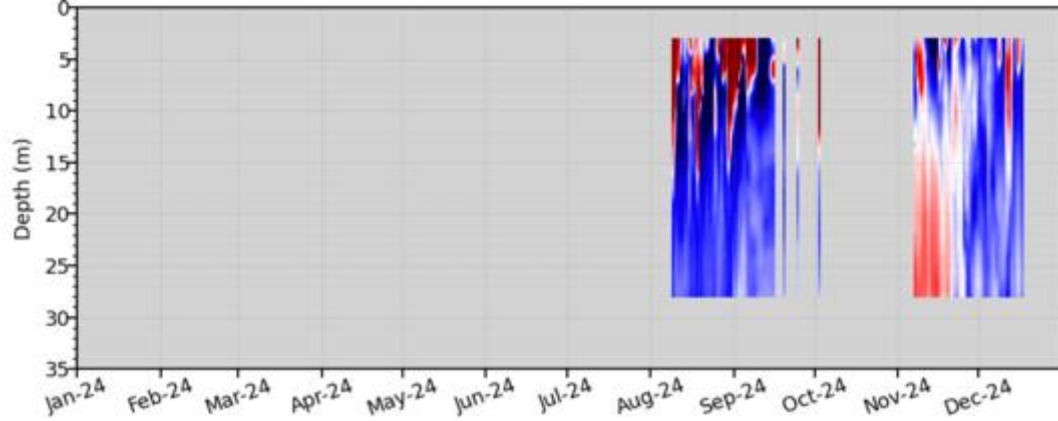
Hoodsport Oxygen Anomaly, 2024-2025, 14 years



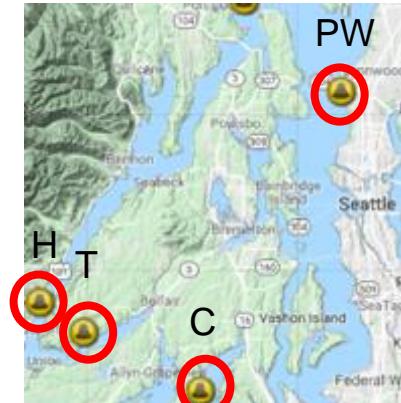
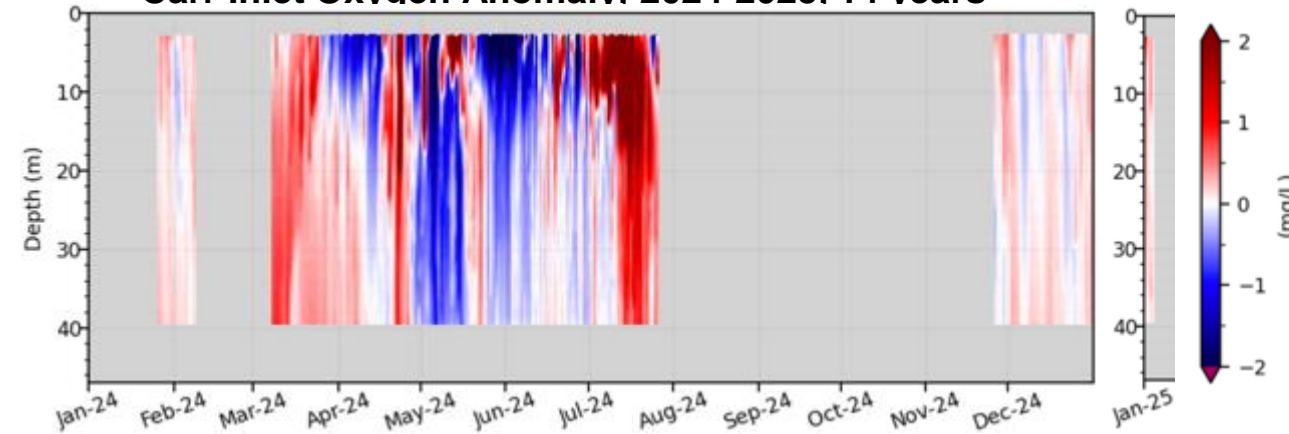
Point Wells Oxygen Anomaly, 2024-2025, 14 years



Twanoh Oxygen Anomaly, 2024-2025, 14 years

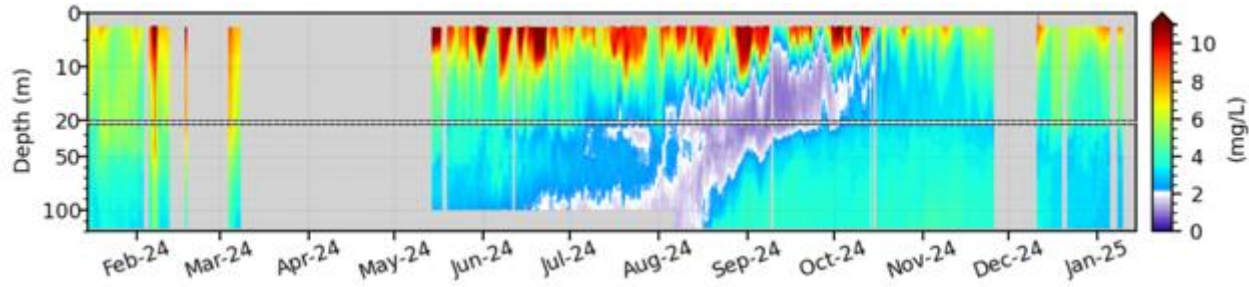


Carr Inlet Oxygen Anomaly, 2024-2025, 14 years



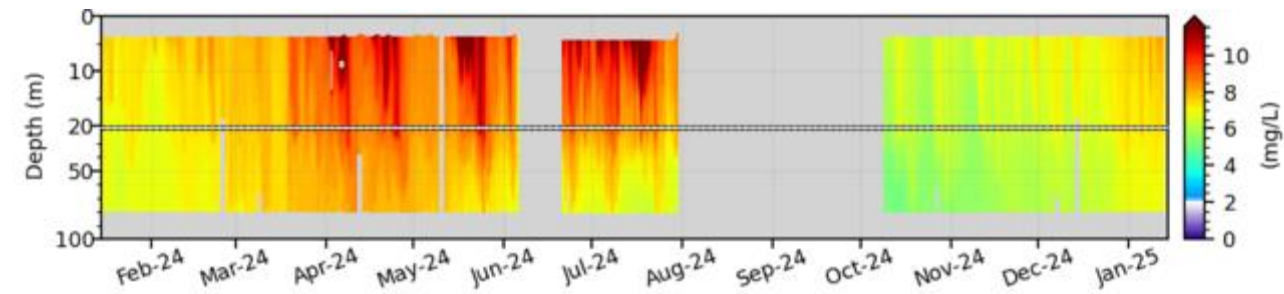
Oxygen Concentration

Hoodsport Oxygen Concentration, 2024-2025

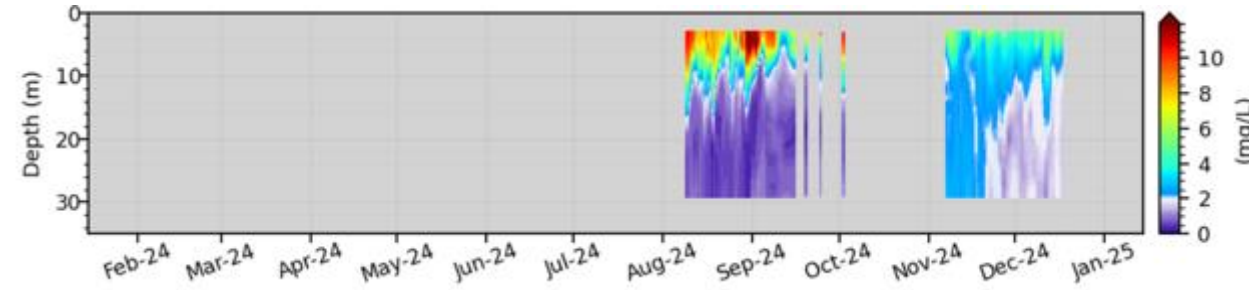


Puget Sound Profiling Buoys

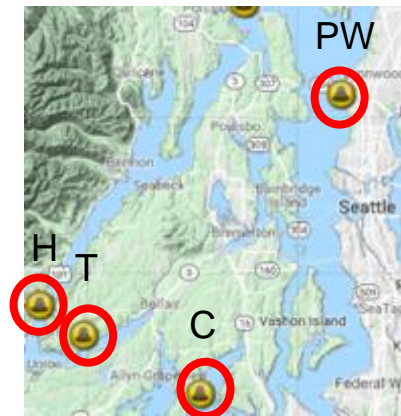
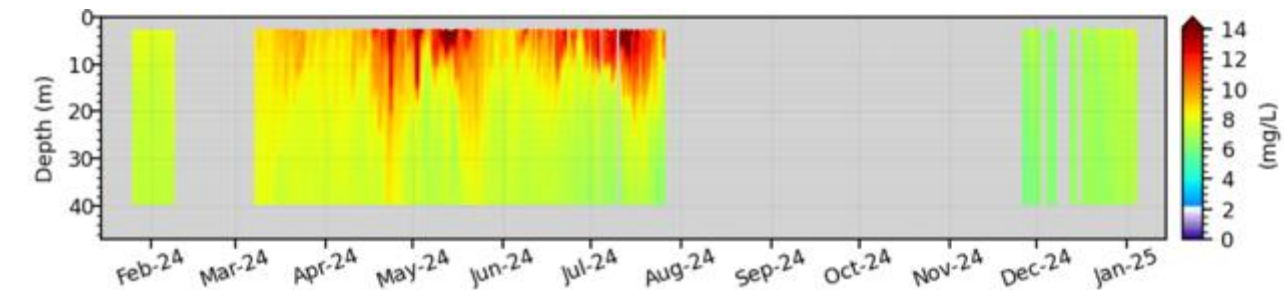
Point Wells Oxygen Concentration, 2024-2025



Twanoh Oxygen Concentration, 2024-2025

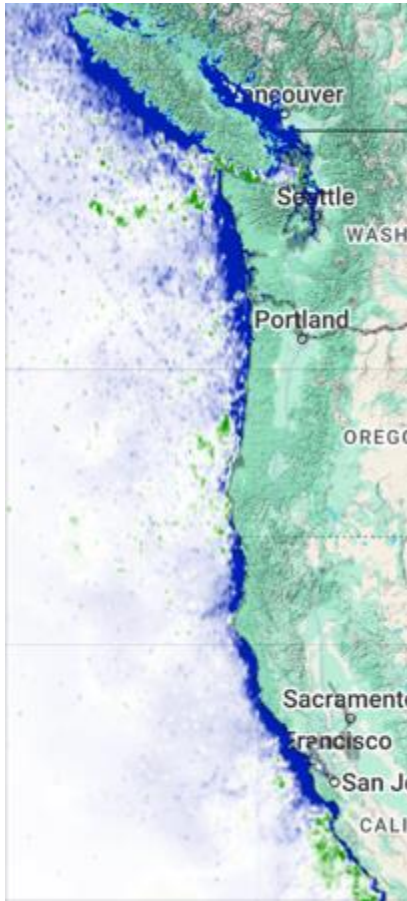


Carr Inlet Oxygen Concentration, 2024-2025



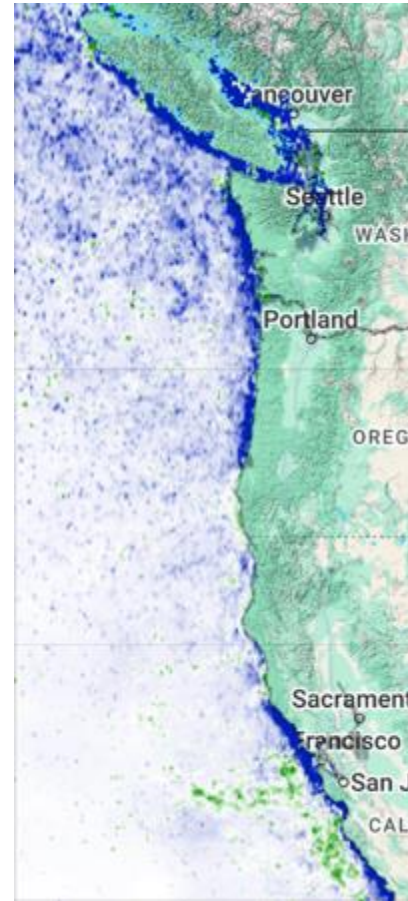
October 2024

OSU MODIS 2002-2012



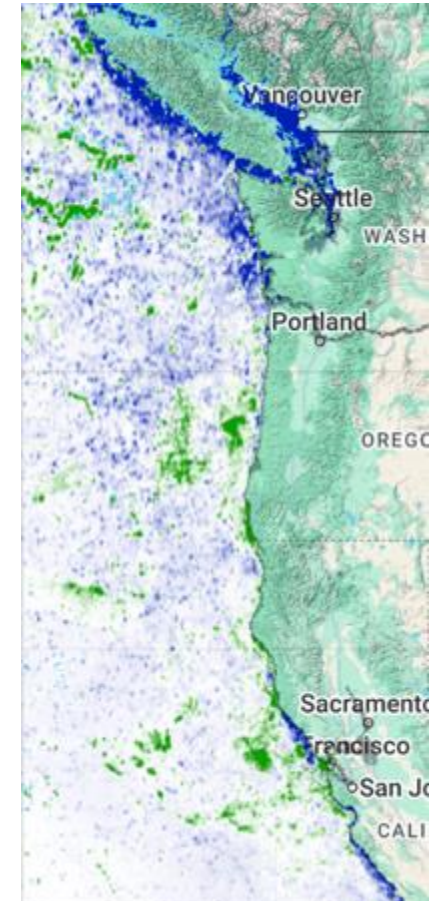
November 2024

OSU MODIS 2002-2012

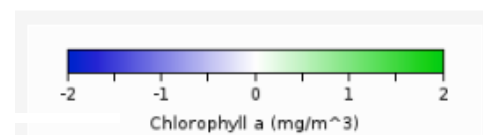


December 2024

OSU MODIS 2002-2012



Chlorophyll



CDIP Wave Observations: NW Pacific Coast Extratropical Storms December 12-15, 2024



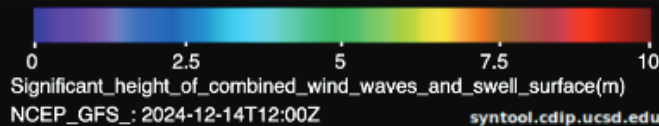
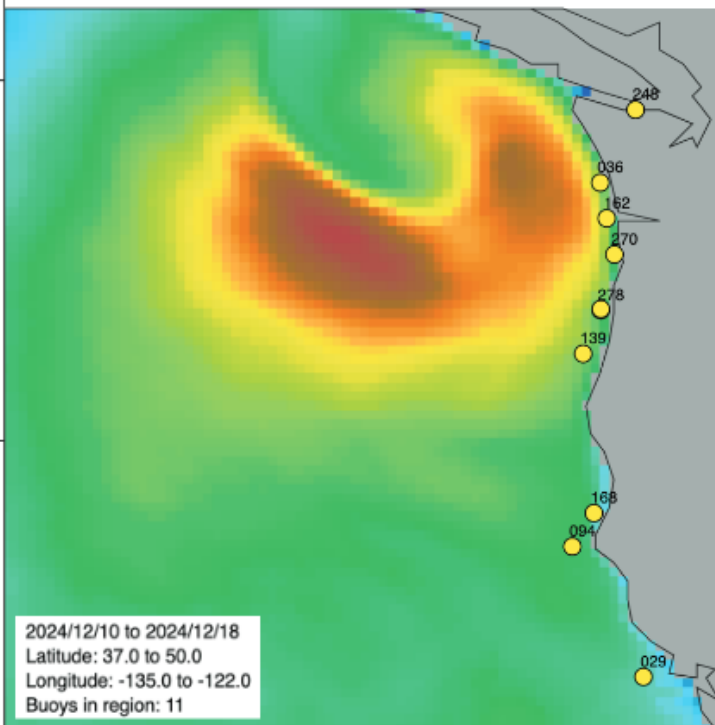
US Army Corps
of Engineers



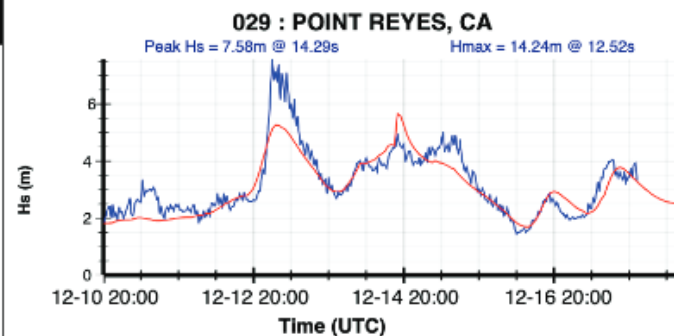
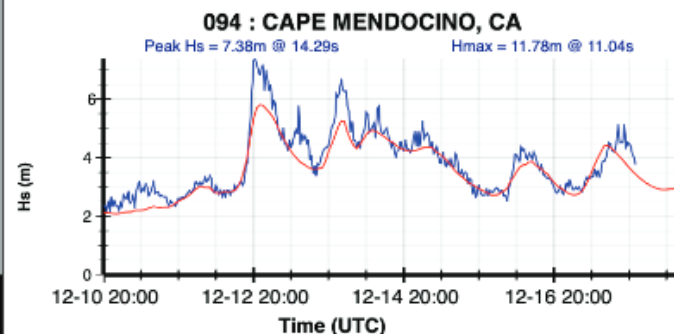
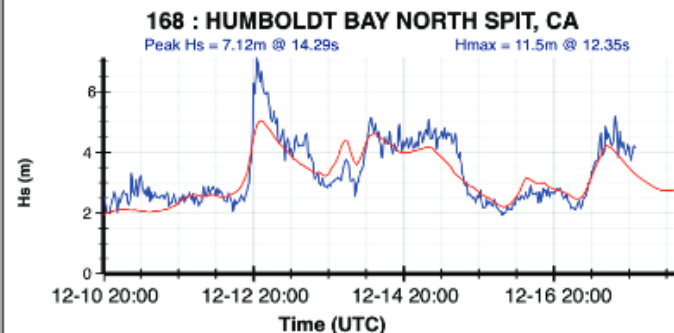
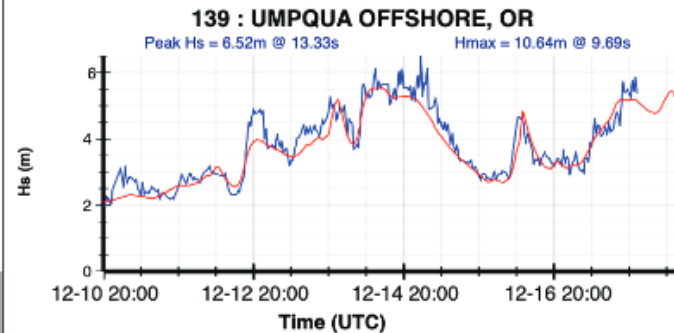
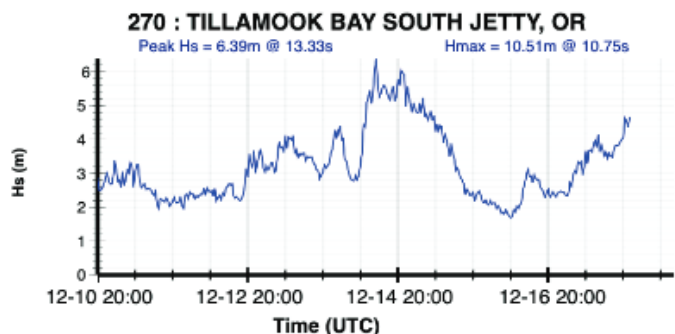
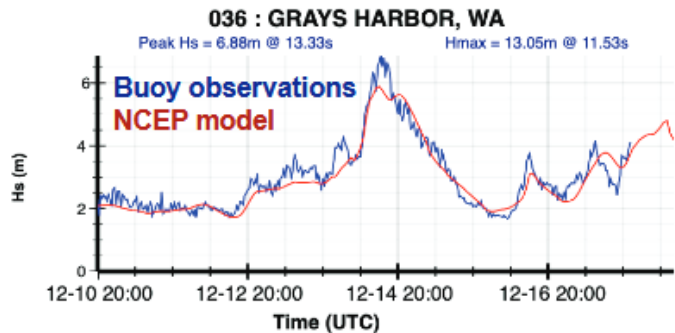
UC San Diego



cdip.ucsd.edu



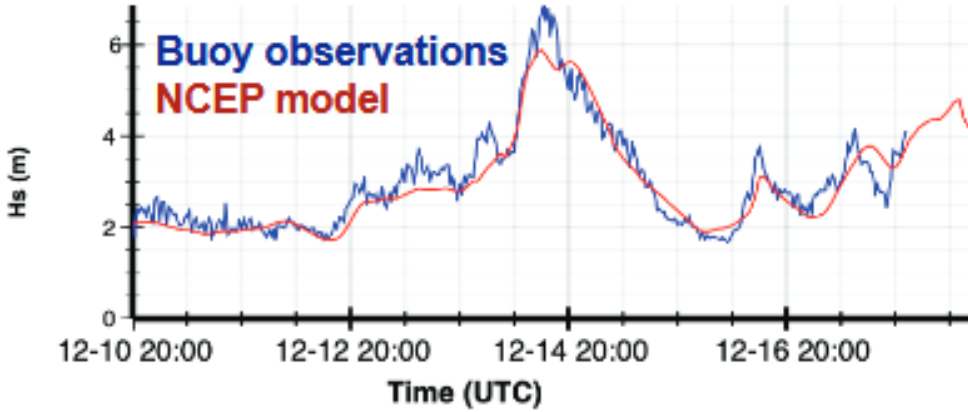
- Extratropical storm activity in the East Pacific continues to generate elevated winter wave conditions.
- CDIP stations in Northern California and Oregon recorded wave heights near their expected annual maxima, exceeding the operational forecast by 1-2 m.
- Combined with King Tides and a storm surge of ~1 m measured at NOAA gauges, significant coastal inundation reported along the Oregon and Washington coast.



036 : GRAYS HARBOR, WA

Peak Hs = 6.88m @ 13.33s

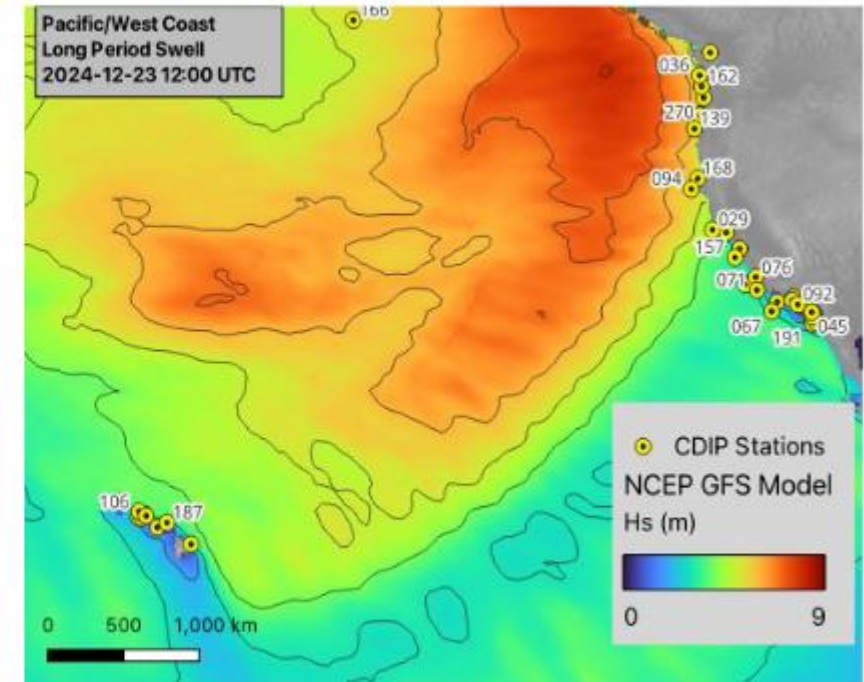
Hmax = 13.05m @ 11.53s



This storm season has been unusually intense this year, with multiple major storm tracks including a bomb cyclone generating a historical pressure drop and 13-meter waves.



CDIP Wave Observations: Pacific Coast Long Period Swell December 22 - 24, 2024



- An intense extratropical cyclone in the North Pacific generated historically powerful swell at the longest wind-generated wave periods, $T_p \geq 25$ seconds.



Thank You Coast Guards!

This storm season has been unusually intense this year, with multiple major storm tracks including a bomb cyclone generating a historical pressure drop and 13 meter waves. This has been particularly hard on our in-situ assets off the coast. We are indebted to the US and Canadian Coast Guards and the Makah Tribe for their roles in helping us recover valuable assets affected by storm action. The CRITFC/CMOP Plume buoy moved a couple km in November, and then another 1 km during the bomb cyclone. The US Coast Guard volunteered to recover the buoy in order to remove it from its new potentially hazardous location close to a shipping channel. The Coast Guard Cutter Elm successfully recovered the buoy mid-December, and it is now home at the new CMOP Field Office in Astoria, Oregon.

Farther north, the UW/APL Cha'ba buoy withstood the bomb cyclone but broke loose afterwards. Fortunately it drifted into the Strait of Juan de Fuca, where the Neah Bay Coast Guard helped tow it closer to shore. The Makah Tribe's F/V Alyeska then plucked it out of the water with all of its equipment intact.

Lastly, one of the two Quileute Tribe's Backyard Buoys spotter buoys went adrift during the bomb cyclone and wandered for a while. Fortunately, the Canadian Coast Guard Cutter Sir Wilfred Grenfel was able to recover the buoy off the coast of Vancouver Island and it has been retrieved.



To summarize:

Coastal conditions

- La Niña advisory.
- Fall (Sep-Nov) MHW dissipated; offshore WA coastal buoy relatively normal temperature. Temperature anomaly variation at nearshore coastal buoys, but nothing exceptional.
- No hypoxia issues

Puget Sound

- Warmer and saltier than average across all basins, cooler than average and fresher than average surface water in Hood Canal in January. Puget Sound retentive of heat and saltier signal from past.
- Oxygen anomaly mixed between basins; minor hypoxia in Hood Canal into December, no fall fish kills.

Chlorophyll & HABs

- Satellite data show offshore blooms October and December; blooms within Salish Sea throughout fall.
- HAB species have been present off and on, but in small numbers.

Waves

- Big wave events throughout October-December due to storms.

The background features a light gray, stylized pattern of overlapping leaves and a bird, possibly a penguin, in the center. The leaves are elongated and pointed, while the bird is depicted in profile, facing left.

www.nanoos.org

janewton@uw.edu

ricarini@uw.edu